

NEWS

Thomas & Betts

FOR IMMEDIATE RELEASE

CONTACT: Camille Dager
HB&M
215-440-9800

Thomas & Betts Introduces Steel City® Low-Profile Floor Box for Shallow Concrete Floors

MEMPHIS, Tenn. – June 2005 – In response to the use of shallow concrete pours for upper floors to reduce building costs, Thomas & Betts has released a new low-profile floor box. At a height of 2 1/2 inches, the Steel City® 668-S Ultra-shallow Floor Box provides a four-gang recessed service floor box solution that is ideal for these applications.

The Steel City 668-S Ultra-shallow Floor Box offers the largest cubic inch capacity of any recessed floor box for shallow floors. Aesthetically appealing, it has a heavy duty die cast cover with a durable powder coat finish to match any décor. It also offers an optional trim ring that allows the cover to be mounted flush with the floor in tile and wood floor applications. Other features include a cord door with a heavy-duty latch that remains firmly in the open position to prevent damage to cables, additional knockouts up to two inches on the bottom of the box for installation flexibility, removable voltage dividers between compartments that allow a single conduit to feed two or more adjacent compartments and data panels that accommodate jacks from many manufacturers.

The new Steel City 668-S Ultra-shallow Floor Box was developed for high-density power and data outlets in commercial construction, such as hospitals, schools and office buildings. It meets UL scrub water exclusion requirements and is UL and CSA approved.

For more information on Steel City® 668-S Ultra-shallow Floor Boxes, visit www.tnb.com or contact your Thomas & Betts sales representative by calling (800) 816-7809.

Corporate Overview

Thomas & Betts Corporation (NYSE: TNB) is a leading designer and manufacturer of electrical connectors and components used in industrial, commercial, communications and utility markets. The company is also a leading producer of commercial heating units and highly engineered steel structures used, among other things, for utility transmission. Headquartered in Memphis, Tenn., the company has manufacturing, distribution and office facilities worldwide. In 2004, the company reported sales of \$1.5 billion.

###

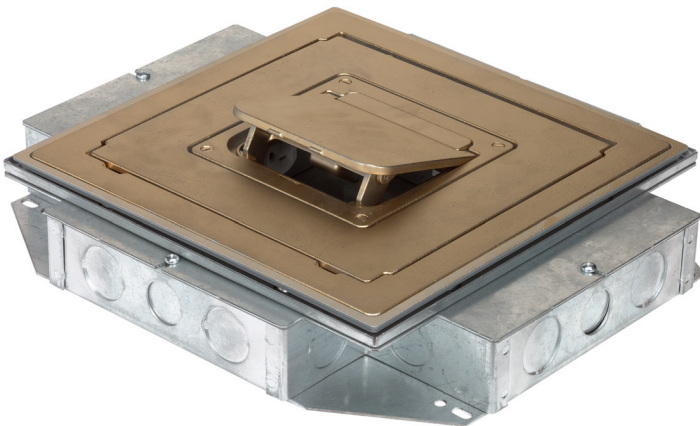
Steel City®

NEW!

668-S Ultra Shallow Floor Box



Aluminum powder coat finish cover shown open with single-gang duplex plate and Keystone Jack plate installed.



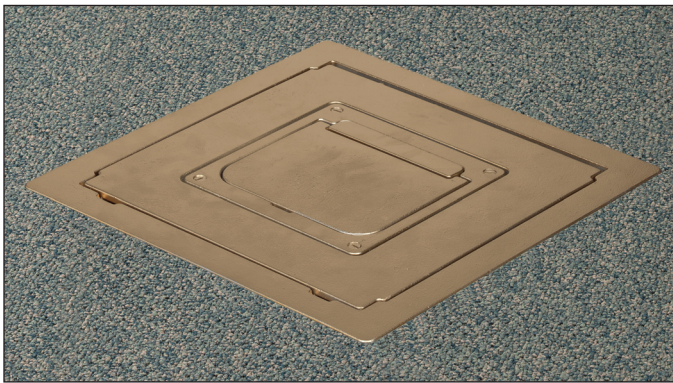
Brass powder coat finish cover shown closed.

The new 668-S Ultra Shallow floor box from Thomas & Betts provides a high capacity power and data solution for shallow concrete floors. The low profile, 4-gang box is constructed of galvanized stamped steel. Removable voltage dividers allow users to customize wiring configurations by feeding two or more adjacent compartments with a single conduit. Metallic covers with durable powder coat finish are designed to match any décor, while optional trim rings allow covers to be mounted completely flush with the floor in tile or wood floor applications.

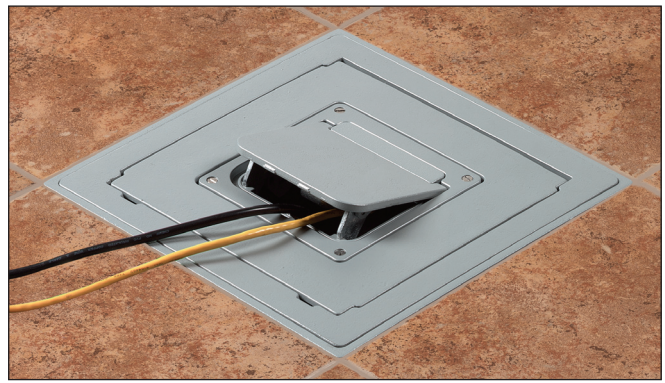
- Low profile (2½" height) for shallow concrete pours
- 4-gang, recessed service for a high capacity, aesthetic floor box solution
- Stamped steel box construction
- Removable voltage dividers between compartments allow a single conduit to feed 2 or more adjacent compartments
- Metallic covers feature durable powder coat paint to match any décor (aluminum, brass, black, brown and beige)
- Heavy duty cord door in the cover latches firmly in the open position to prevent damage to cables
- Optional tile trim allows flush mounting for tile and wood floor applications
- MopTite™ covers meet UL scrubwater exclusion requirements for carpet, tile and wood
- Largest cubic inch capacity of any shallow recessed 4-gang floor box
- Additional KO's (up to 2") on the bottom of the box enable installation flexibility
- Data panels are available to accommodate jacks from many manufacturers
- Custom device panels are available – contact technical service about this offering

Material: Box – Galvanized Steel
Cover – Die-Cast Zinc

Listing: UL, CSA Listed



Standard mounting configuration: Flange on cover overlaps carpet, tile or wood floors.



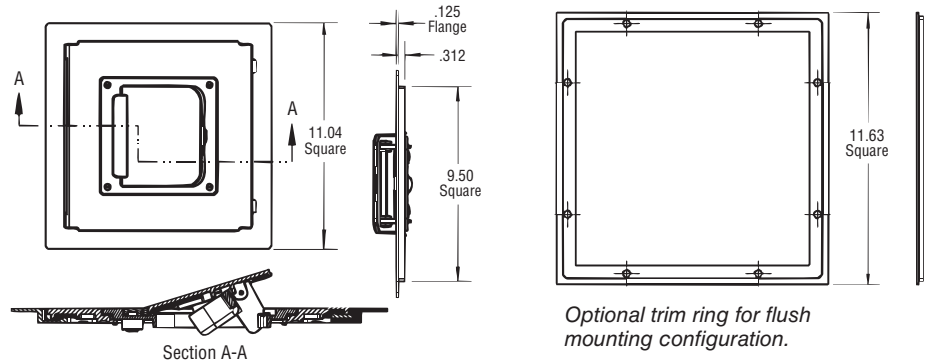
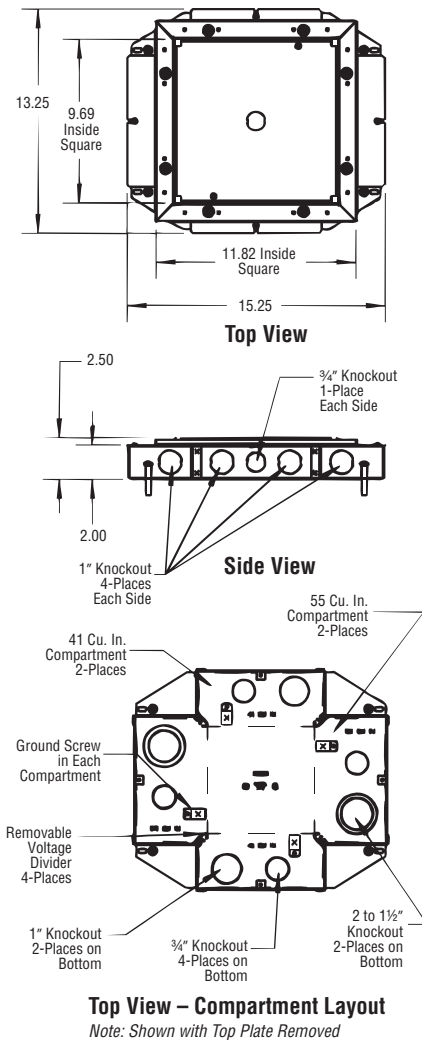
Flush mounting configuration: Optional trim ring allows cover to be mounted flush with tile or wood floors.



Steel City® 668-S Ultra Shallow Floor Box

Cat. Number	Description	Std. Pkg. Qty.	UPC Number
668-S	Ultra Shallow Recessed Floor Box	1	78599103825
668-CST-ALM	668-S Metal Cover - Aluminum Powder Coat*	1	78599103955
668-CST-BRS	668-S Metal Cover - Brass Powder Coat*	1	78599103956
668-CST-BLK	668-S Metal Cover - Black Powder Coat*	1	78599103952
668-CST-BRN	668-S Metal Cover - Brown Powder Coat*	1	78599103953
668-CST-BGE	668-S Metal Cover - Beige Powder Coat*	1	78599103954
668-S-1RP	668-S Single Gang Duplex Plate	4	78599103828
668-S-1G	668-S Single Gang GFCI Plate	4	78599103827
668-S-BP	668-S Blank Plate	4	78599103830
668-S-6RJ	668-S Data Plate - 6 Keystone Jacks	4	78599103829
668-S-6PAN	668-S Data Plate - 6 Panduit® Jacks	4	78599103862
668-S-6ORT	668-S Data Plate - 6 Ortonics® Jacks	4	78599103861
668-S-6AVA	668-S Data Plate - 6 Avaya® Jacks	4	78599103863
668-TRIM-ALM	668-S Trim Ring - Aluminum Powder Coat*	4	78599103960
668-TRIM-BRS	668-S Trim Ring - Brass Powder Coat*	4	78599103864
668-TRIM-BLK	668-S Trim Ring - Black Powder Coat*	4	78599103957
668-TRIM-BRN	668-S Trim Ring - Brown Powder Coat*	4	78599103958
668-TRIM-BGE	668-S Trim Ring - Beige Powder Coat*	4	78599103959

*Contact Technical Services for color samples.



Thomas & Betts

Please ask your Thomas & Betts sales representative for a complete catalog of quality Thomas & Betts electrical products or visit us at www.tnb.com. For customer service, 1-800-816-7809. For technical questions, call 1-888-862-3289.

© 2005 Thomas & Betts Corporation. All rights reserved. Printed in U.S.A. 5/05/15M GM-1625

Thomas & Betts Corporation
Electrical Division
8155 T&B Boulevard
Memphis, TN 38125
901-252-5000

Thomas & Betts Ltd.
700 Thomas Avenue
Iberville, Québec J2X 2M9
450-347-5318