

# **NEWS**

# **Thomas & Betts**

## **FOR IMMEDIATE RELEASE**

**CONTACT:** Camille Dager  
HB&M  
215-440-9800

## **Thomas & Betts Introduces Steel City® Cast Iron Floor Box for Slab-On-Grade Compliance**

**MEMPHIS, Tenn. – June 2005** – Thomas & Betts has released a new four-gang recessed service floor box constructed of cast iron to meet code and specification requirements for slab-on-grade applications. The Steel City® 665-CI Cast Iron Floor Box also offers the largest cubic inch capacity of any four-gang cast iron recessed floor box.

Other features include removable voltage dividers between compartments that allow a single conduit to feed two or more adjacent compartments and inline 1 1/4-inch hubs that allow high-capacity straight runs for telecommunications wiring. The Steel City 665-CI Cast Iron Floor Box is an addition to Thomas & Betts' popular line of recessed service floor boxes.

The Steel City 665-CI Cast Iron Floor Box was developed for high-density power and data outlets in commercial construction, such as hospitals, schools and office buildings, and is UL and CSA compliant.

For more information on Steel City 665-CI Cast Iron Floor Boxes, visit [www.tnb.com](http://www.tnb.com) or contact your Thomas & Betts sales representative by calling (800) 816-7809.

### **Corporate Overview**

Thomas & Betts Corporation (NYSE: TNB) is a leading designer and manufacturer of electrical connectors and components used in industrial, commercial, communications and utility markets. The company is also a leading producer of commercial heating units and highly engineered steel structures used, among other things, for utility transmission. Headquartered in Memphis, Tenn., the company has manufacturing, distribution and office facilities worldwide. In 2004, the company reported sales of \$1.5 billion.

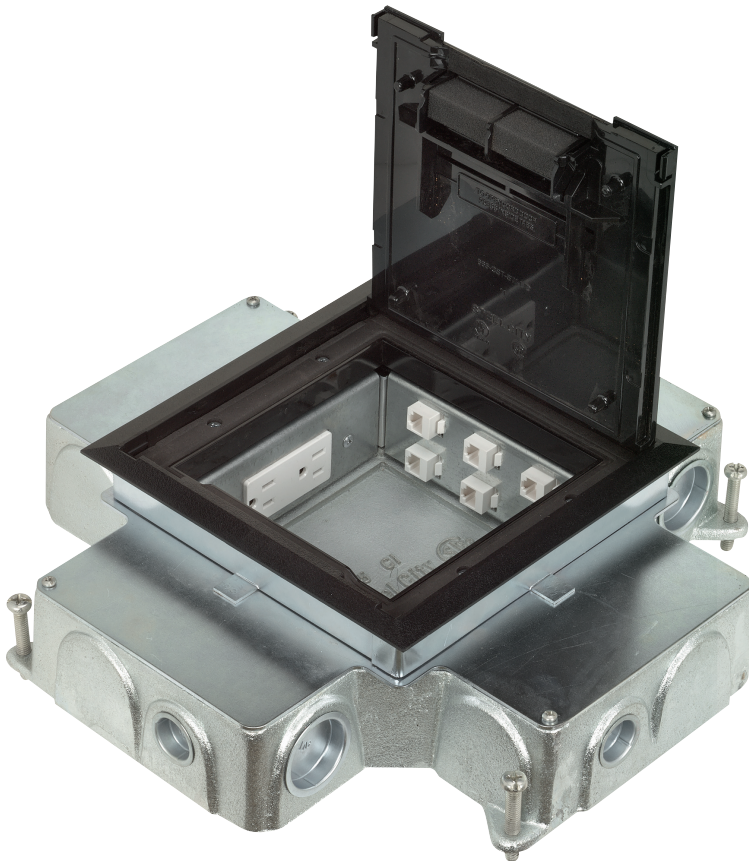
###

## Steel City®

**NEW!**

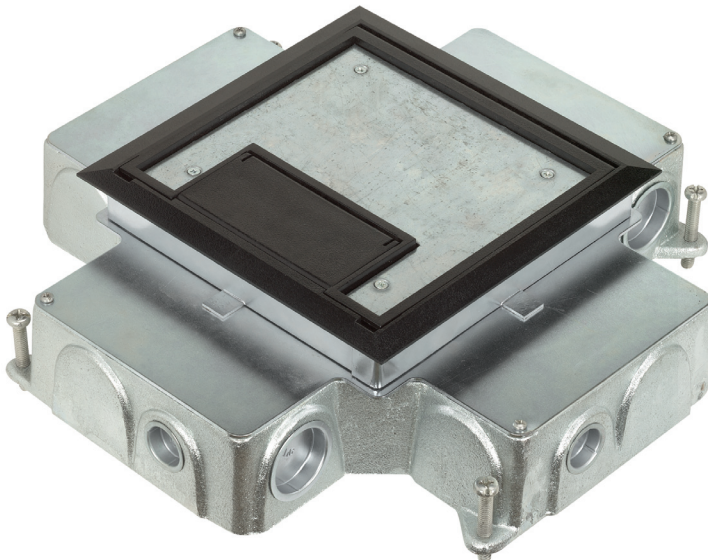
### 665 Cast Iron Floor Box

The new Steel City® 665 Cast Iron Floor Box provides a high capacity power and data solution for ground floor installations. This 4-gang recessed service floor box is ideal for slab-on-grade applications. Removable voltage dividers allow users to customize wiring configurations by feeding two or more adjacent compartments with a single conduit. Aesthetic covers feature a recess to accept floor covering to match the surrounding floor.



*Cover opened with single-gang GFCI plate and Keystone Jack plate installed.*

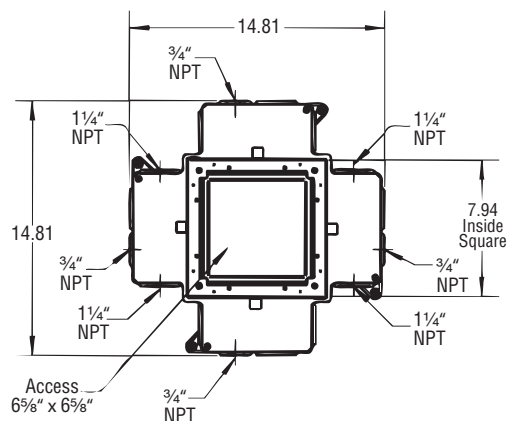
- Cast iron construction for slab-on-grade applications
- 4-Gang, recessed service for a high capacity, aesthetic floor box solution
- Removable voltage dividers between compartments allow a single conduit to feed two or more adjacent compartments
- Heavy duty nonmetallic covers with steel reinforcement plates are available in a wide variety of colors to match any décor (black, gray, brown and beige)
- Separate cord door in the cover latches firmly in the open position to prevent damage to cables
- MopTite™ covers meet UL scrubwater exclusion requirements for carpet, tile and wood
- Largest cubic inch capacity of any cast iron recessed 4-gang floor box
- Inline 1 1/4" hubs allow high capacity straight runs for communication wiring
- Custom device panels and hub sizes are available – contact technical service about these offerings



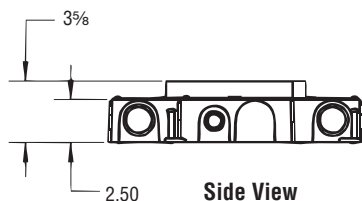
*Cover shown closed.*

Material: Box – Cast Iron  
Cover – Polycarbonate with Steel Reinforcement Plate

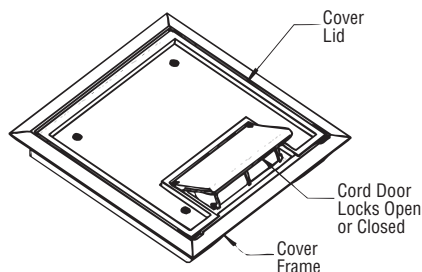
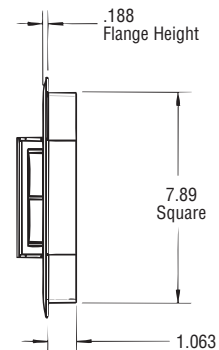
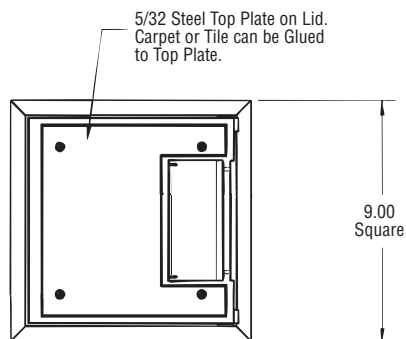
Listing: UL, CSA Listed



Top View

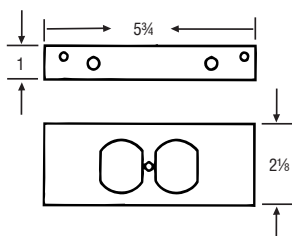


Side View

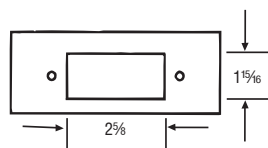


## Steel City® 665 Cast Iron Floor Box

| Cat. Number    | Description                        | Std. Pkg. Qty. | UPC Number  |
|----------------|------------------------------------|----------------|-------------|
| 665-CI         | 665 Cast Iron Floor Box            | 1              | 78599103865 |
| 665-CST-SW-BGE | 665 Cover, Scrubwater Tight, Beige | 4              | 78599103268 |
| 665-CST-SW-BLK | 665 Cover, Scrubwater Tight, Black | 4              | 78599103269 |
| 665-CST-SW-BRN | 665 Cover, Scrubwater Tight, Brown | 4              | 78599103270 |
| 665-CST-SW-GRY | 665 Cover, Scrubwater Tight, Gray  | 4              | 78599103271 |
| 665-RP         | 665 Single Gang Duplex Plate       | 4              | 78599161862 |
| 665-GP         | 665 Single Gang GFCI Plate         | 4              | 78599161864 |
| 665-BP         | 665 Blank Plate                    | 4              | 78599161863 |
| 665-6RJ        | 665 Data Plate - 6 Keystone Jacks  | 4              | 78599101372 |



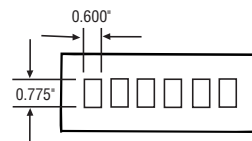
665-RP



665-GP



665-BP



665-6RJ

**Thomas & Betts**

Please ask your Thomas & Betts sales representative for a complete catalog of quality Thomas & Betts electrical products or visit us at [www.tnb.com](http://www.tnb.com). For customer service, 1-800-816-7809. For technical questions, call 1-888-862-3289.

© 2005 Thomas & Betts Corporation. All rights reserved. Printed in U.S.A. 5/05/15M GM-1626

**Thomas & Betts Corporation**  
Electrical Division  
8155 T&B Boulevard  
Memphis, TN 38125  
901-252-5000

**Thomas & Betts Ltd.**  
700 Thomas Avenue  
Iberville, Québec J2X 2M9  
450-347-5318