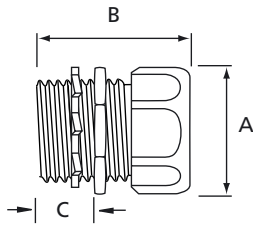


# T&B fittings

## Rigid and intermediate metal conduit fittings

### Metallic threadless fittings

- Makes a permanent connection and eliminates the need for cutting a thread on the rigid conduit.
- A split steel ring with diagonal serrations grips the conduit and bites into it for positive ground.
- Insulation helps to guarantee continuity of service with protection of the conductor at the critical point: the bushing
- Available in 2 versions, with or without nylon insert
- Components: gland nut, steel ring, steel spacer (only for sizes up to 1 inch), body (with or without insert), locknut



### Technical Information

Conduit Type	Metallic rigid conduits
Style	Straight
Thread	NPT (up to 1") or NPS (larger than 1")
Material	Body: zinc plated steel or malleable iron Gland nut: zinc plated steel (up to 1") or malleable iron (larger sizes) Locknut: zinc plated steel Insert: nylon

### Approvals



002884



E2308

### Ordering Information

PRODUCT REF. INSULATED	PRODUCT REF. NON-INSULATED	FOR CONDUIT SIZE [inch]	THREAD SIZE	DIMENSIONS			WEIGHT INSULATED [kg/100]	WEIGHT NON-INSULATED [kg/100]	QUANTITY INSULATED [pieces]	QUANTITY NON-INSULATED [pieces]
A	B	C								
[mm]	[mm]	[mm]								
8123	8121	1/2	1/2" NPT	31.0	42.9	38.1	9.1	9.5	10	25
8223	8221	3/4	3/4" NPT	38.9	44.5	38.1	12.0	11.7	10	25
8323	8321	1	1" NPT	48.4	50.8	14.3	18.1	18.0	5	5
8423	8421	1 1/4	1 1/4" NPS	34.9	61.9	27.0	36.3	34.7	5	5
8523	8521	1 1/2	1 1/2" NPS	68.3	66.7	19.1	40.8	48.8	2	2
8623	8621	2	2" NPS	82.6	71.4	21.4	72.6	71.2	2	2
8723-TB	8721	2 1/2	2 1/2" NPS	104.8	96.8	28.6	154.2	160.6	2	2
8823-TB	8821	3	3" NPS	123.8	101.6	13.5	181.4	195.0	1	1
8853	8851	3 1/2	3 1/2" NPS	139.7	104.8	28.6	220.0	226.8	1	1
8973	8971	4	4" NPS	153.2	123.8	28.6	275.0	283.5	1	1

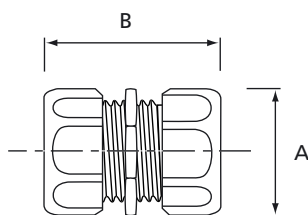
Note: insulated version also available in right angled (elbow) style up to 2"

# T&B fittings

## Rigid and intermediate metal conduit fittings

### Metallic threadless couplings

- Easy coupling between 2 rigid conduits
- Eliminates the need for cutting a thread on the rigid conduits
- When tightened with a wrench, they form a UL listed and CSA approved concrete-tight connection
- Components: 2 gland nuts, steel ring, steel spacer (only for sizes up to 1 inch), body



### Technical Information

Conduit Type	Metallic rigid conduits
Style	Straight
Thread	NPT (up to 1") or NPS (larger than 1")
Material	Body: zinc plated malleable iron or steel Gland nut: zinc plated steel (up to 1") or malleable iron (larger sizes) Locknut: zinc plated steel

### Approvals



002884



E2308

### Ordering Information

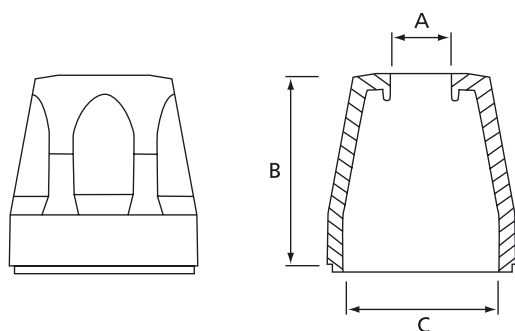
PRODUCT REF.	FOR CONDUIT SIZE [inch]	DIMENSIONS		WEIGHT [kg/100]	QUANTITY [pieces]
		A [mm]	B [mm]		
8120	1/2	32.5	50.8	8.2	25
8220	3/4	40.5	58.7	14.6	25
8320	1	47.6	68.3	22.2	5
8420	1 1/4	60.3	71.4	54.0	5
8520	1 1/2	66.7	92.1	68.5	2
8620	2	82.6	96.8	98.9	2
8720	2 1/2	100.0	136.5	227.7	2
8820	3	119.1	139.7	258.6	1
8850	3 1/2	131.8	139.7	317.5	1
8970	4	144.5	139.7	378.8	1

# T&B fittings

## Rigid and intermediate metal conduit fittings

### Plastic bushing

- For threadless rigid conduits and intermediate metal conduits
- When assembled to the end of a threadless conduit, provides a well rounded insulating surface over which conductors may be pulled or on which conductors may bear while in service.
- Designed to be popped onto, and bush, conduit end.
- Fast easy installation without screws
- High impact thermoplastic construction, for applications up to +105°C
- Flammability rating UL94 V-1



4.2

### Technical Information

Conduit Type	Metallic rigid conduits
Style	Straight
Material	UL 94 V-1 rated thermoplastic
Conformity:	UL514, ANSI C80.4, ANSI C33.84 NFPA 70-1978 (ANSI)

### Approvals



002884



E2308

### Ordering Information

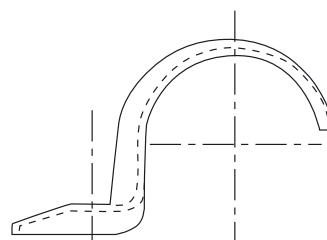
PRODUCT REF.	FOR CONDUIT SIZE	A	DIMENSIONS B	C	WEIGHT	QUANTITY
INSULATED	[inch]	[mm]	[mm]	[mm]	[kg/100]	[pieces]
TRIB-50	1/2	15.1	15.1	27.0	0.4	50
TRIB-75	3/4	19.8	35.3	31.8	1.1	50
TRIB-100	1	25.4	38.1	39.7	1.5	25
TRIB-125	1 1/4	23.8	41.3	48.8	2.9	10
TRIB-150	1 1/2	38.9	42.1	55.2	4.3	5
TRIB-200	2	50.0	46.0	68.3	7.9	2
TRIB-250	2 1/2	59.9	50.8	82.6	7.7	2
TRIB-300	3	74.2	56.4	99.2	5.0	2
TRIB-350	3 1/2	85.7	58.7	113.1	14.7	2
TRIB-400	4	97.6	61.1	127.0	14.7	2

## T&B fittings

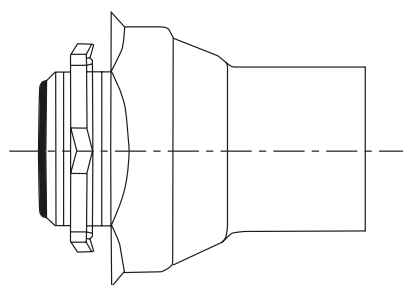
### Other fittings and accessories for rigid conduits

Examples of other fittings and accessories for the rigid and intermediate metal conduit:

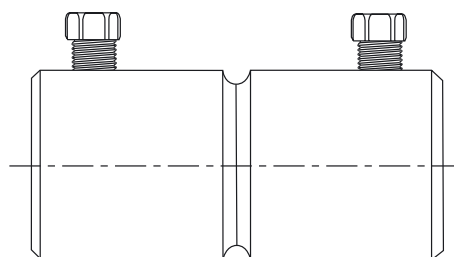
- Conduit straps and supports



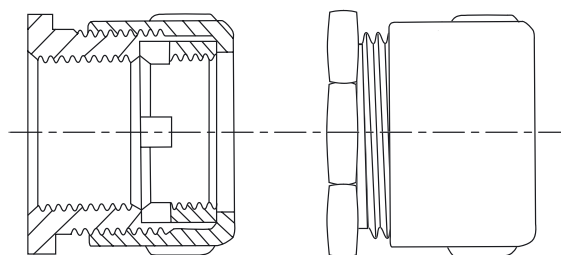
- Uncoated and PVC-coated hubs for threaded rigid conduits



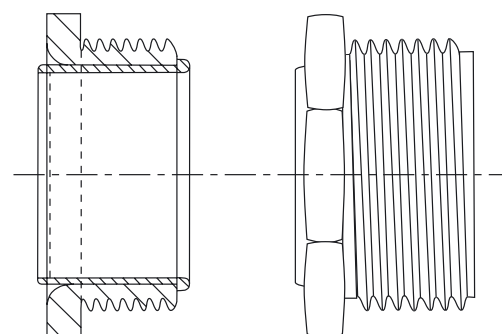
- Set screw connectors and couplings



- Threaded Erickson couplings



- Insulated nipples and bushings



For more detailed information on these products, please visit the Thomas & Betts global web site: [www.tnb.com](http://www.tnb.com) and / or contact your Sales Office for product availability.

# T&B fittings

## Other Thomas & Betts Conduit and Fittings

The product ranges shown in this catalogue represent only a small part of the extensive range of conduits and fittings that Thomas & Betts offer on a global scale, including among others:

- Other special fittings for flexible metallic conduits (e.g. PVC coated fittings, aluminium fittings, fittings with revolving grounding lug, etc)
- Conduit outlet bodies, for ordinary and hazardous locations
- Explosion proof conduit outlet bodies, elbows, reducers, plugs, adapters and couplings
- Explosion proof aluminium sealing fittings
- STAR Teck metal clad cable glands for harsh and corrosive environments
- Non-metallic sheathed cable glands
- OCAL, corrosion resistant PVC-coated rigid conduits, junction boxes and accessories



For more detailed information on these products, please visit the Thomas & Betts global web site: [www.tnb.com](http://www.tnb.com) and/or contact your Sales Office for product availability.